

# ISLA BELA

ENTRANCE 1 FLOOR 1 DOOR D

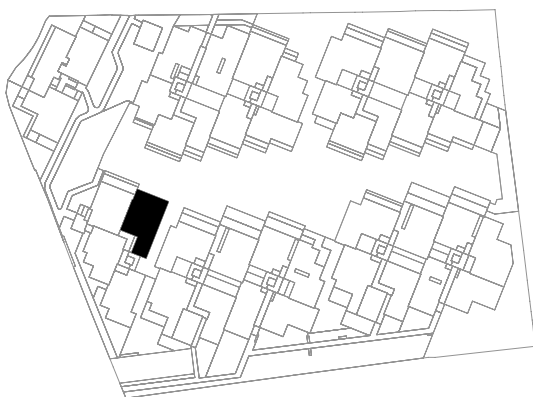
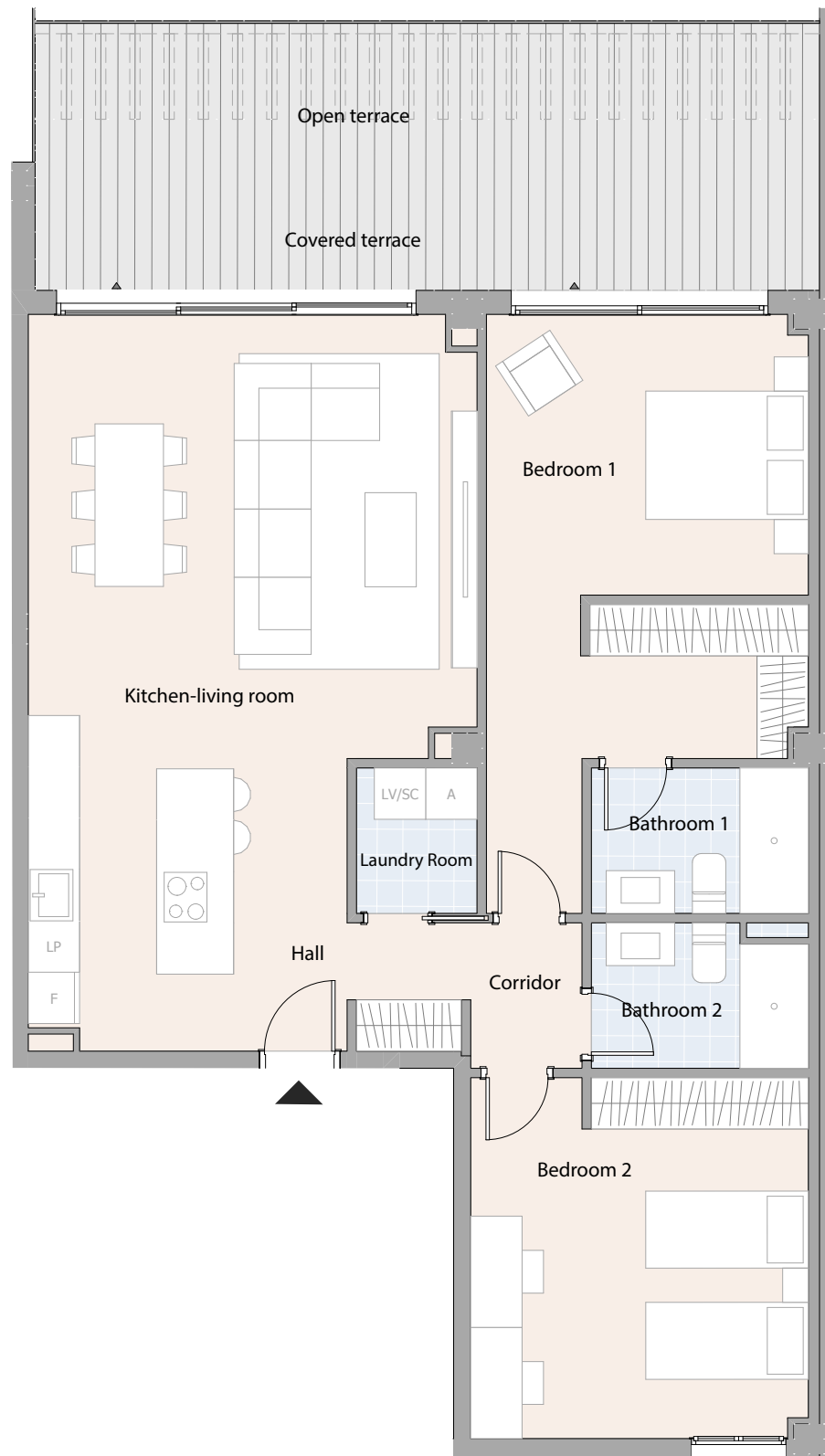
Housing type 217a

## Useful areas

Hall	4,10 m <sup>2</sup>
Kitchen-living room	37,37 m <sup>2</sup>
Bedroom 1	21,05 m <sup>2</sup>
Bedroom 2	16,52 m <sup>2</sup>
Corridor	2,21 m <sup>2</sup>
Laundry room	2,39 m <sup>2</sup>
Bathroom 1	4,31 m <sup>2</sup>
Bathroom 2	4,11 m <sup>2</sup>
Open terrace	10,71 m <sup>2</sup>
Covered terrace	18,63 m <sup>2</sup>

## Summary of surfaces

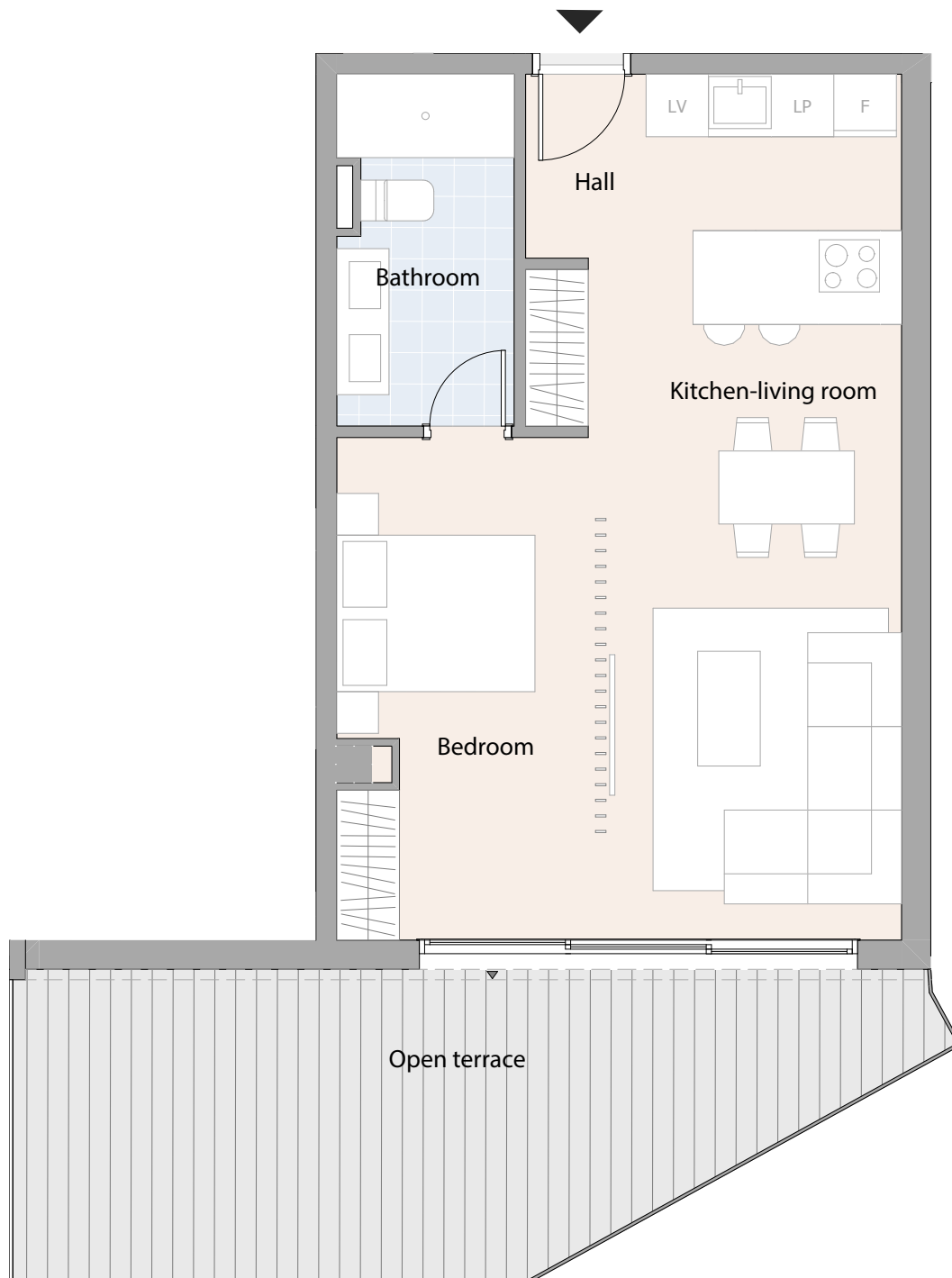
Useful interior surface area	92,06 m <sup>2</sup>
Interior cons. surface area	105,76 m <sup>2</sup>
Cons. surface area of covered terraces	18,63 m <sup>2</sup>
Uncovered outdoor built area	10,71 m <sup>2</sup>
<b>Total built-up area + cc aa</b>	<b>149,97 m<sup>2</sup></b>



## ENTRANCE 2 FLOOR 1 DOOR D

Housing type 101a

# ISLA BELA

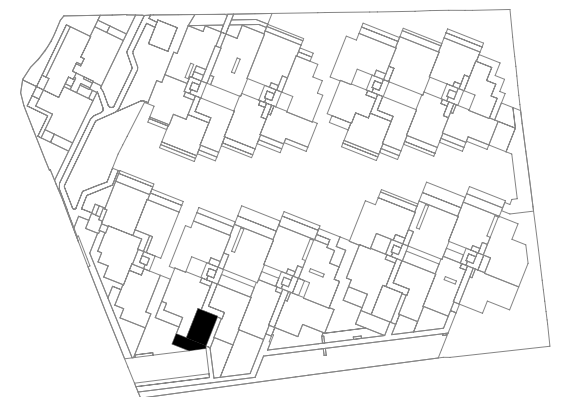


### Useful areas

Hall	1,80 m <sup>2</sup>
Kitchen-living room	25,11 m <sup>2</sup>
Bedroom	11,32 m <sup>2</sup>
Bathroom	5,56 m <sup>2</sup>
Open terrace	29,68 m <sup>2</sup>

### Summary of surfaces

Useful interior surface area	43,79 m <sup>2</sup>
Interior constructed surface area	50,32 m <sup>2</sup>
Cons. surface area of covered terraces	0,00 m <sup>2</sup>
Uncovered outdoor built area	22,53 m <sup>2</sup>
<b>Total built-up area + cc aa</b>	<b>61,76 m<sup>2</sup></b>

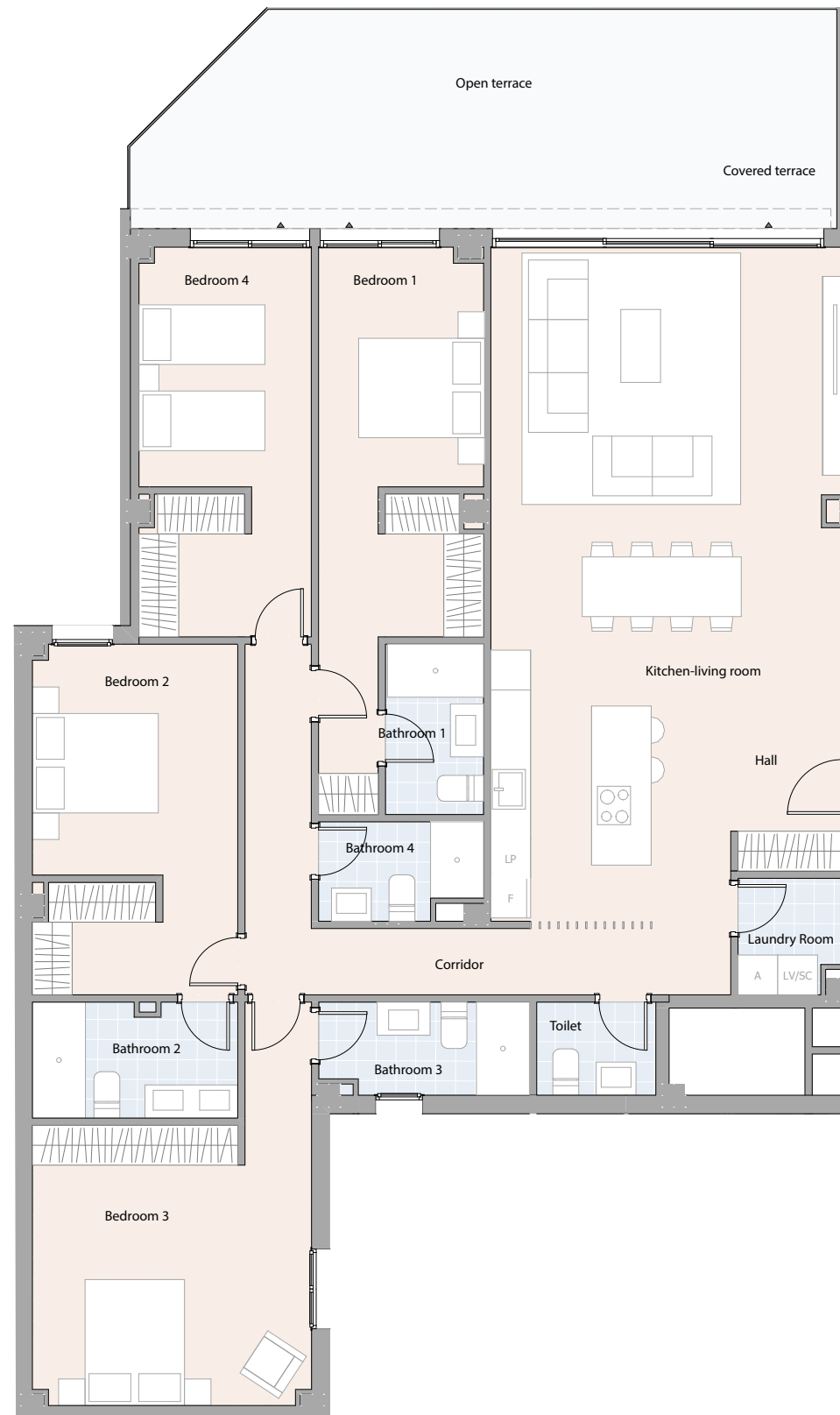
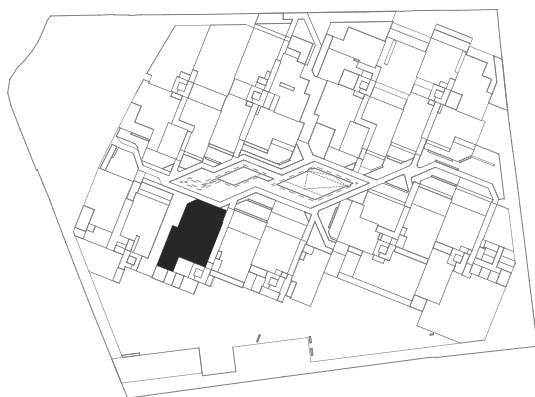


## Useful areas

Hall	4,18 m <sup>2</sup>
Kitchen-living room	48,57 m <sup>2</sup>
Bedroom 1	16,39 m <sup>2</sup>
Bedroom 2	15,90 m <sup>2</sup>
Bedroom 3	19,49 m <sup>2</sup>
Bedroom 4	14,86 m <sup>2</sup>
Corridor	11,62 m <sup>2</sup>
Laundry room	2,61 m <sup>2</sup>
Bathroom 1	3,80 m <sup>2</sup>
Bathroom 2	5,33 m <sup>2</sup>
Bathroom 3	4,32 m <sup>2</sup>
Bathroom 4	3,34 m <sup>2</sup>
Toilet	2,53 m <sup>2</sup>
Open terrace	27,76 m <sup>2</sup>
Covered terrace	5,50 m <sup>2</sup>

## Summary of surfaces

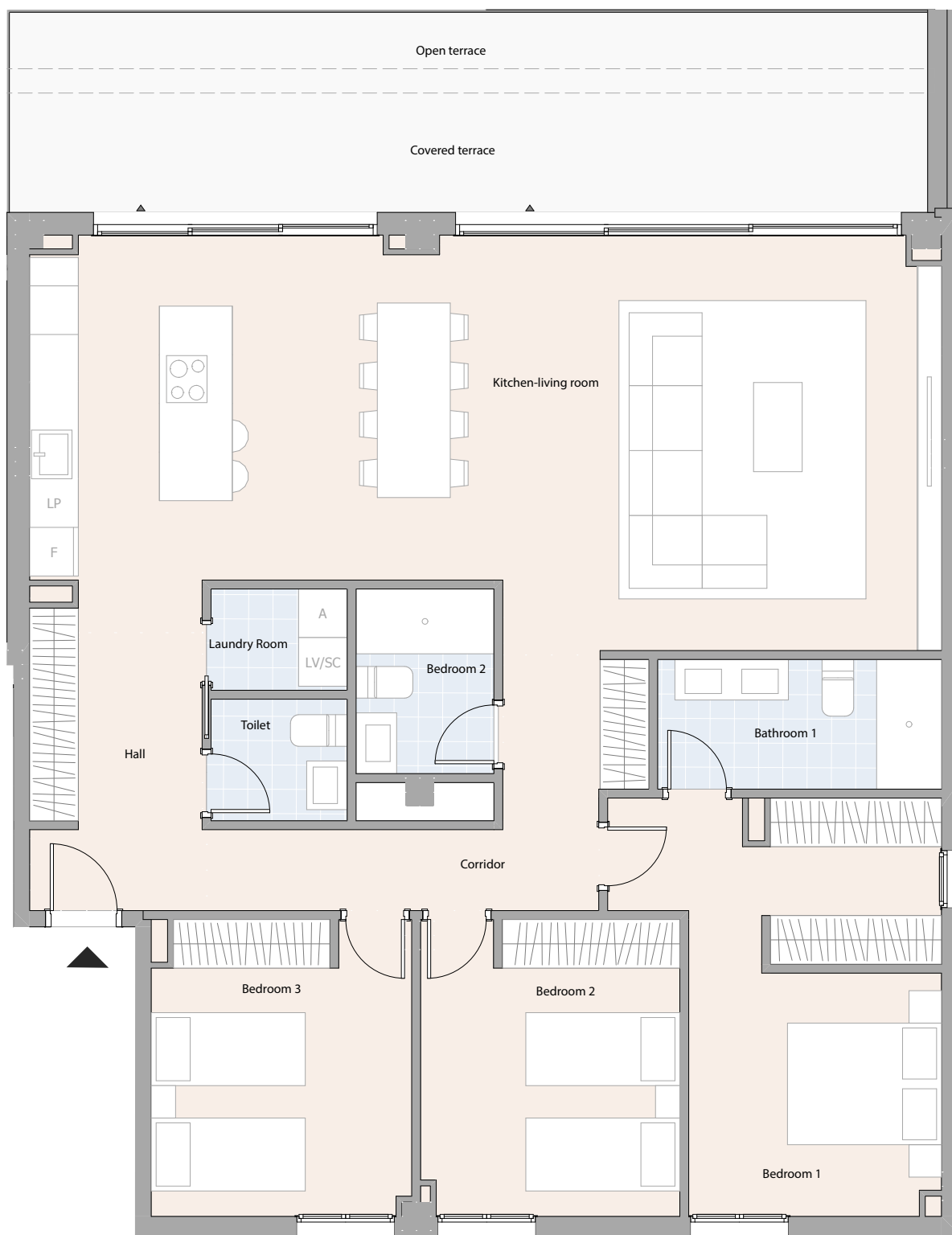
Useful interior surface area	152,94 m <sup>2</sup>
Interior constructed surface area	174,87 m <sup>2</sup>
Cons. surface area of covered terraces	5,51 m <sup>2</sup>
Uncovered outdoor built area	28,12 m <sup>2</sup>
<b>Total built-up area + cc aa</b>	<b>218,72 m<sup>2</sup></b>



## ENTRANCE 2 FLOOR 2 DOOR B

Housing type 315a

# ISLA BELA



### Useful areas

Hall	7,05 m <sup>2</sup>
Kitchen-living room	53,45 m <sup>2</sup>
Bedroom 1	16,88 m <sup>2</sup>
Bedroom 2	11,49 m <sup>2</sup>
Bedroom 3	11,47 m <sup>2</sup>
Corridor	8,37 m <sup>2</sup>
Laundry room	2,10 m <sup>2</sup>
Bathroom 1	5,60 m <sup>2</sup>
Bathroom 2	3,87 m <sup>2</sup>
Toilet	2,52 m <sup>2</sup>
Open terrace	8,33 m <sup>2</sup>
Covered terrace	20,30 m <sup>2</sup>

### Summary of surfaces

Useful interior surface area	122,80 m <sup>2</sup>
Interior constructed surface area	141,03 m <sup>2</sup>
Cons. surface area of covered terraces	20,30 m <sup>2</sup>
<b>Uncovered outdoor built area</b>	<b>8,33 m<sup>2</sup></b>
<b>Total built-up area + cc aa</b>	<b>194,14 m<sup>2</sup></b>

